

Air Distribution Manifolds

AH34 Series



5-Station 316L Air Manifold - Valved Inlet - Right Aligned - Lockable - PED Approved.

Applications

- Instrument Air distribution
- Signal Air Isolation
- Signal Air lock-out

Technical Specifications

| | |
|-------------------------------------|------------------------|
| Manifold Body: | 316L-TP ASTM A312/ASME |
| Isolation Valves: | ASTM-A351-CF8M |
| Inlet Isolation Valve Port: | Rp 3/4" BSPT or NPT |
| Outlet Isolation Valve Port: | Rp 1/4" BSPT or NPT |
| Drain Valve Port: | Rp 1/4" BSPT or NPT |
| Stem Packing: | PTFE |
| Valve Stem: | 316 Stainless Steel |
| Valve Sleeve: | Red Vinyl Plastic |
| End Fittings: | 316L-TP ASTM A 276-10 |
| Isolation Valves Certified: | PED 97/23/EC |
| Manifold Cert Compliance: | PED 97/23/EC |

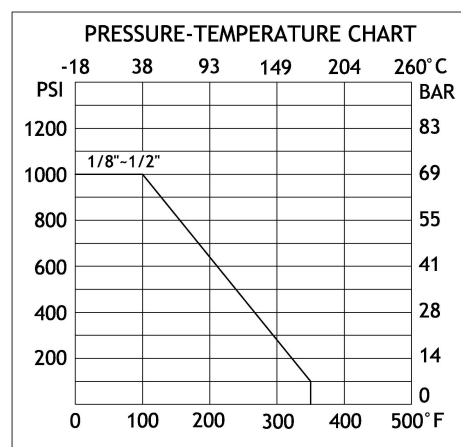
| | |
|-------------------------------|-----------------|
| Operating Temperature: | -20 to +150°C |
| Working Pressure: | 150 psi (10bar) |
| Factory Test Pressure: | 215 psi (15bar) |
| Valve Pressure Rating: | See Graph |

| | |
|--------------------------------|-----------------|
| O.A.L. c/w Drain Valve: | 470mm |
| O.A.L. w/o Drain Valve: | 432mm |
| Isolation v/v Spacing: | 50 mm |
| Surface Finish: | Standard Polish |



Order Code Standard

| Description | Part Number |
|-------------------------|------------------------|
| 5-Stn 316L Air Manifold | AH34RP5L-14RC2R |
| Right Aligned. | |
| Lockable.Valved Inlet. | |



5-Station 316L Air Manifold - Valved Inlet - Right Aligned - Lockable - PED Approved

Product Features

Traceability: Each RCC Manifold carries a unique identifying code. This code provides a method for tracing materials and is an important part of quality assurance and control.

Output Connections: Rp 1/4", 316 Compression, Quick Fit.

Lockable: All RCC Manifold are **LOTO** compliant.

Special products can be supplied to order. Manifolds fitted with valves to vent upstream pressure in accordance with **HAZOP** guidelines.

Order Code Venting

| Description | Part Number |
|----------------------------|-----------------|
| 5-Station 316 Air Manifold | AH34RP5L-14RV2R |
| Single Right Aligned. | |
| Lockable + Venting | |

| NO. OF OUTLETS SINGLE SIDE | OVERALL LENGTH IN mm W/O DRAIN V/V | OVERALL LENGTH IN mm C/W DRAIN V/V |
|-------------------------------|---------------------------------------|---------------------------------------|
| 2 | 282.0 | 320.0 |
| 3 | 332.0 | 370.0 |
| 4 | 382.0 | 420.0 |
| 5 | 432.0 | 470.0 |
| 6 | 482.0 | 520.0 |
| 7 | 532.0 | 570.0 |
| 8 | 582.0 | 620.0 |
| 9 | 632.0 | 670.0 |
| 10 | 682.0 | 720.0 |
| 11 | 732.0 | 770.0 |
| 12 | 782.0 | 820.0 |
| 13 | 832.0 | 870.0 |
| 14 | 882.0 | 920.0 |
| 15 | 932.0 | 970.0 |

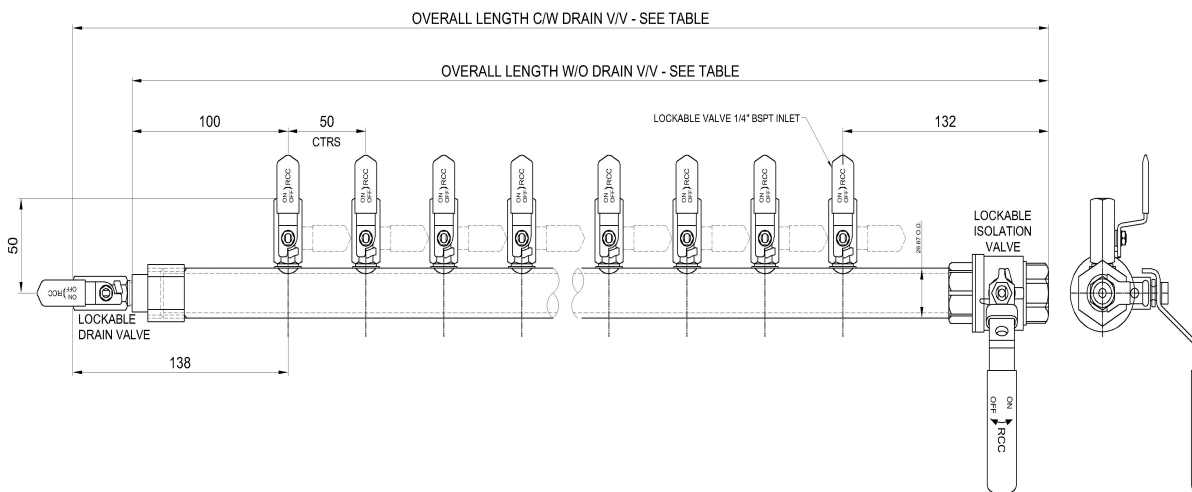


NOTES:

MAX WORKING TEMPERATURE PTFE PACKING = 200°C

TESTED COLD WORKING PRESSURE = 15BAR

LOCKABLE VALVES WILL HAVE RED VINYL SLEEVES



Design and materials may change without notice



RCC IRL LTD
LEE VIEW PLACE,
MONKSTOWN,
CO. CORK
IRELAND

Email: sales@rccirl.ie

Phone: 00 353 21 4841562